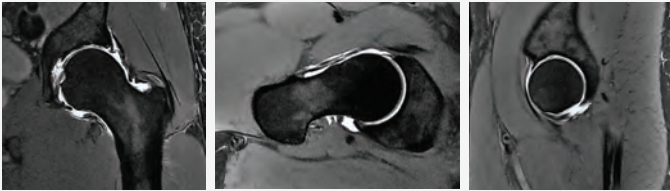


Clinical Procedure Details

3.0T Ultra High Field MRI, Cartilage Mapping, Orthopaedic Oncology, Pain Management and Ultrasound Procedures

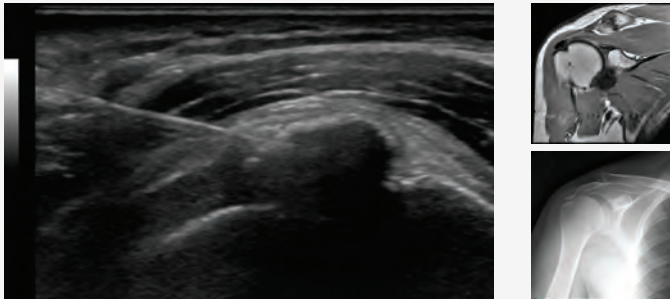
3.0T MR Arthrogram



Superior Labral Tear

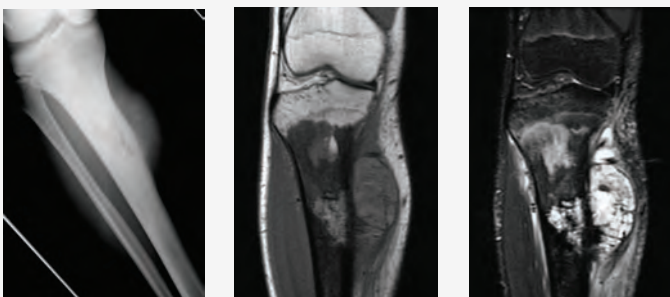
Left hip of a 57 year old male with chronic pain. MRI demonstrates a tear of the superior labrum as well as a stigmata of cam-type femoroacetabular impingement.

Case Profiles



Multi-Modality Patient Management From Diagnosis to Treatment

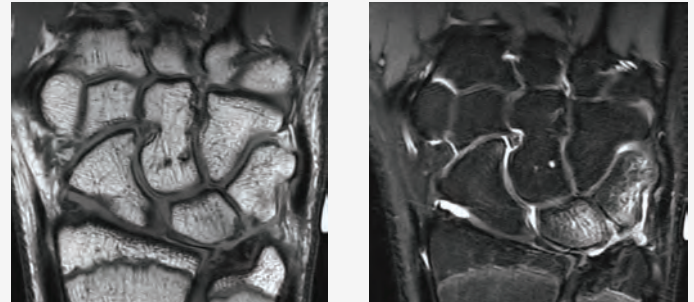
This 50 year old male presented with unremitting right shoulder pain. Xray evaluation demonstrated a calcific focus in the rotator cuff region suspicious for calcific tendonitis. This was confirmed with MRI as seen in the above coronal proton density image. The calcific deposit was successfully treated with ultrasound guided aspiration and injection procedure. Ultrasound guided techniques provide a safe and effective means of treating many musculoskeletal conditions.



Orthopaedic Oncology Osteosarcoma – Initial Diagnosis & Surgical Planning

Right lower leg images of a 15 year old male demonstrating an osteo sarcoma of the proximal tibia.

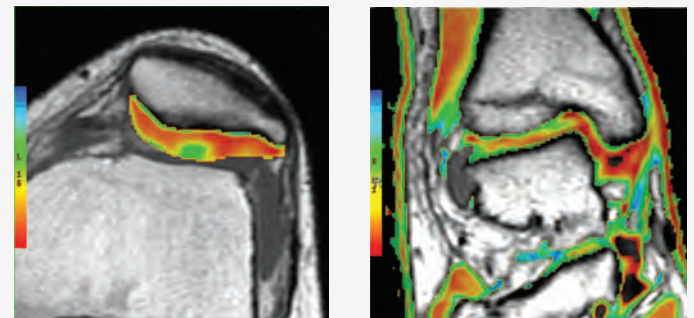
3.0T Ultra High Field MRI



Tears of TFC Articular Disc & Lunotriquetral Ligament

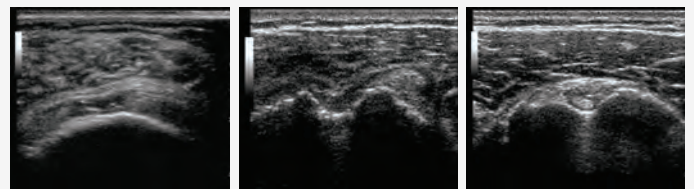
Left wrist of a 15 year old male with pain for 6 months. Coronal fat-suppressed and non-fat suppressed images demonstrate a small 3.0mm tear of the left triangular fibrocartilage articular disc near its radial attachment as well as a tear of the lunotriquetral ligament.

Advanced Imaging Techniques



Cartilage Mapping

A technique to identify areas of abnormal cartilage by comparing the rate of signal differences in healthy cartilage versus degenerating cartilage and to display that difference as a "color map." The above examples of T2 cartilage mapping show abnormal cartilage as blue-green colors.



MSK Ultrasound Imaging – Dislocated Biceps Tendon & Rotator Cuff Tear

The three examples above demonstrate the effectiveness of MSK Ultrasound as a complement to MRI. Normal Biceps Tendon in groove is shown on the far right.